

ColorWorks Colour Label Range

ON-DEMAND COST-EFFECTIVE COLOUR LABELS



EPSON®
EXCEED YOUR VISION

TAKE CONTROL WITH ON-DEMAND COLOUR LABELS

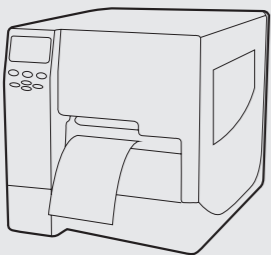
Print eye-catching custom colour labels when you need them with our on-demand printers. Two stage printing and wasteful pre-ordering are a thing of the past with Epson ColorWorks. Now you can print full colour labels first time, using your own designs and in quantities you will actually use.

Streamline your colour label production

Our on-demand inkjet colour label printers eliminate the traditional problems of thermal overprinting. Now you can simply print high-quality, customised colour labels, tickets and tags in-house, as and when you want them. No more wasting time, disruption, waste or inconvenience. No more pre-printed label inventory, production downtime, lost orders or late shipments.

Old process

1 Pre-printed colour and static data

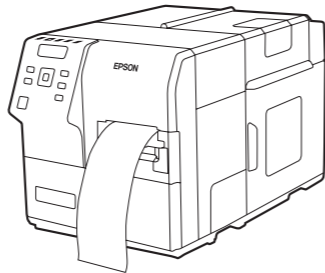
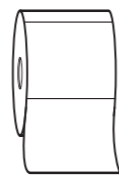


2 Over-printing black and variable data



New process (On-demand printing)

1 Print labels in full colour first time



Durable, cost-effective colour labels for a wide range of applications

From manufacturing and retail to pharmaceutical, healthcare and ticketing, there's a ColorWorks product that can make a real difference by giving you the flexibility to print the labels you need, when you need them. The ColorWorks C3500 and C831 are also ideal for companies who want to print labels that comply with the latest GHS (Globally Harmonised System) standards for chemical labelling.



Manufacturing

- Improve inventory management
- Make operating procedures clearer
- Highlight important information
- Enhance visual impact and branding
- Comply with GHS standards



Pharmaceutical and healthcare

- Highlight critical patient information
- Print large volumes easily
- Make labels clear and consistent
- Reduce the risk of errors



Retail

- Increase awareness of products
- Highlight product specifications
- Enhance branding
- Produce special and one-off labels



Ticketing

- Print individually designed tickets and ID badges
- Customise communication
- Improve visual identification

The benefits of on-demand colour label printing



Take control

- No pre-printed label ordering, you stay in control
- The whole label production process is now in your hands



Improve efficiency

- No time spent hunting for and retrieving correct pre-printed labels
- No production disruptions to change pre-printed rolls



Add flexibility

- Produce customised labels immediately
- Change designs on the run, print as many labels as you need



Increase speed

- Print in full colour without sacrificing printing speed
- Hugely improve total label production time



Eliminate unexpected charges

- Reduce charges for custom pre-prints
- Reduce label creation errors, reduce late deliveries and penalties



Eliminate label waste

- No label scrap due to design changes
- No need to order +10% of pre-printed labels to ensure enough buffer stock



Drastically reduce label inventory

- No more shelves full of pre-printed rolls
- Order and keep only 1 type of label: blanks

SET NEW STANDARDS IN INDUSTRIAL LABEL PRINTING

ColorWorks C7500 Series

Redefine speed, reliability and cost-effective printing by bringing your manufacturing label printing needs in-house. With the ColorWorks C7500 Series you can count on perfect colour labels that look outstanding, get your message across clearly and last a very long time.

Print consistently, reduce downtime

Maximise reliability and make every print perfect with robust hardware including the new PrecisionCore MicroTFP permanent printhead. Ensure consistent, uninterrupted quality with Nozzle Verification Technology that detects blocked nozzles, and dot compensation that compensates for them.

High reliability, running low costs

Enjoy excellent reliability and significant cost savings with the permanent printhead. **The standard warranty is one year or 500km of accumulated printed length, whatever comes first¹.**

Get set up and working with no fuss

Set up and get started quickly and easily with the LCD and control panel. Thanks to our newest printer command set, ESC/Label, you can incorporate your printer into virtually any operating system, while a full range of software utilities supports printer deployment.

ESC/Label



Industrial strength

Ensure longevity with a standard metallic chassis, autocutter and optional re-winder



High quality

Enjoy Epson print quality delivered by Variable Sized Droplet Technology



Plug and play

Seamless integration with the built in ZPLII emulation and ESC/Label language



Versatile

Print on a wide range of materials, up to 108mm wide

Durability

Count on superb performance with the new PrecisionCore permanent printhead and Nozzle Verification Technology

Reliability

Enjoy peace of mind because no major components will need replacing for at least 500km worth of printing²

Speed

Get great results quickly with a printing speed of 300mm/sec

Outstanding print quality

Produce eye-catching results with a resolution of 600x1200dpi

Simplicity

Set up and get started quickly and easily with the front facing LCD and control panel

ColorWorks C7500

Ideal for prints where durability is key



Uses DURABrite Ultra pigment ink



Primarily for printing onto matte media



ColorWorks C7500G

Combines excellent print quality and durability



Uses UltraChrome DL pigment ink



Primarily for printing onto glossy media



DESKTOP COLOUR LABEL PRINTING MADE EASY

“Everything in our shops should reflect quality, reliability and broad diversity. Epson’s ColorWorks printer supports us to achieve this.”

Wim Vandeputte, Finance Manager
Light Gallery (Division of Philips Belgium NV)

ColorWorks C3500

ColorWorks C3500 is the most flexible member of the ColorWorks family. Simple to use, taking very little space at your desk, it allows you to print anything from a wristband, ticket or ID badge or even a durable synthetic label. All this in full colour, high-quality and a fast printing speed of up to 103mm/sec.

Key features

High-quality, four-colour inkjet printing (CMYK)

Individual ink cartridges save you money, as you only replace the colour used

Integrated autocutter

Easy setup software included

Complies with the BS5609 certification³



Effortless

Print labels in minutes with ease

Durable

Long-lasting pigment inks are smudge, water and fade resistant

Economical

A recent research report showed the ColorWorks C3500 had the lowest ink cost per print compared to two competitors⁴

ColorWorks C3400

The compact ColorWorks C3400 has everything you need to print colour enhanced tickets, tags and labels in a desktop environment. The simple front operation allows under-counter positioning, while its integrated autocutter ensures fast, accurate finishing.

Key features

High-quality, on-demand colour printing (CMY)

Print speed of up to 92mm/sec

Integrated autocutter



Low cost

Your investment is fail-safe thanks to the low initial cost of purchase

Compact

Simple front operation and compact size for under-counter positioning



Easy to use

Monitor ink levels and printer status with the LCD display



Convenient

Access all functions easily from the front of the printer, including consumables



Durable prints

Produce long-lasting prints that resist smudging, fading and most liquids with Epson DURABrite Ultra pigment ink



Flexible

Stay in charge with direct control from applications including start-up label software



Reliable

Detect and fix clogged nozzles and dead barcode pixels with the Auto nozzle checking technology



Reliable

Ensure accurate barcode printing with Epson’s automatic nozzle checking technology (AID) that senses and fixes clogged nozzles



Maintenance-free

Forget about replacing the printhead or other working parts – they last for the lifetime of the printer



Versatile

Create high-quality prints on a wide range of materials, including matte and glossy-coated paper and synthetic media in a wide range of formats and sizes



Eco-friendly

Reduce environmental impact with low-power consumption and water-based inks

THE GHS COMPLIANT PRINTER FOR LARGE FORMAT COLOUR LABELS



“The specific processes at Eastman leave no room for errors, this is why we are reliant on a label system which provides reliable and traceable support for the material flows within the plant along with all of the quality control procedures. In view of this, the Epson systems are ideal for us.”

Ando den Engelsman, Quality Specialist at Eastman Chemicals in Middleburg, Germany

ColorWorks C831

This industrial-strength Micro Piezo inkjet label printer is perfectly suited to GHS large format drum and chemical labels.

It combines all the benefits of a rugged colour inkjet printer with the accuracy of an 8-pin tractor feeder and has been BS5609 certified⁵ (complies with the latest GHS standards for chemical labelling). It features print speeds of up to 91.7mm/sec printable areas of up to 203.2mm width, precise label feeding to reduce jamming and high-density barcode printing.

Key features

Print large colour labels quickly and easily, including large format drum and chemical labels

Rely on industrial-strength inkjet printing, including tractor feeder

Comply fully with BS5609 standard⁵

Get connected with standard parallel, USB and LAN interfaces

Durable

Comply with the latest GHS standards for chemical labelling

Reliable

Rely on precision engineering designed to give you five years of high-quality, hassle-free printing

Low TCO

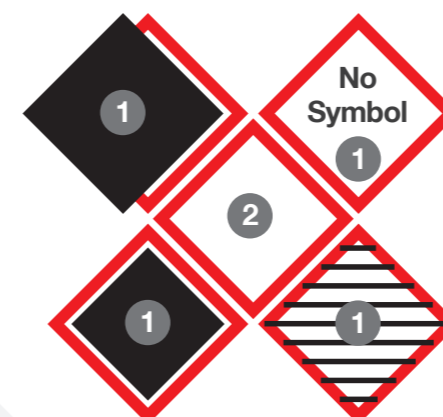
Keep costs and downtime to a minimum – you'll never need to replace the printhead or other working parts

Create on-demand, GHS compliant labels

The traditional 2-step label printing process pre-prints empty pictograms then overprints with the specific label information using thermal transfer printing. But this unavoidably leads to empty pictograms. The only option is to try and cover these spaces, which can lead to what looks like printing mistakes.

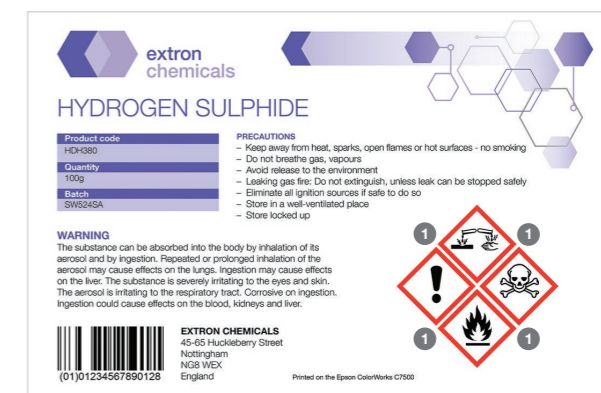
However, with the ColorWorks Series you simply, precisely and perfectly print all pictograms and information onto blank labels in one smooth process. Our industrial inkjet technology is a cost-effective solution for bringing your business up to the new standard, and works seamlessly with DURABrite Ultra pigment ink and PE Matte Label media to deliver perfect labels every time.

Pictograms that break GHS legislation



- 1 Different ways of covering pre-printed GHS pictograms
- 2 Empty pictograms

Full colour label printed on demand and is GHS compliant



- 1 Clearly print the exact pictograms and information required on demand



Fast
Print at high speeds up to 91.7mm/sec







Outstanding print quality
Create superb high-resolution labels at up to 5760×1440dpi



Economical
Keep costs down with high-capacity individual ink cartridges

WHICH PRODUCT MEETS YOUR NEEDS?

Each product in the ColorWorks range has different capabilities. The table below shows, at a glance, which product and media is best suited to which application.

IndustryApplication		Printer					Media					
		DURABrite Ultra pigment ink				UltraChrome DL pigment ink						
		ColorWorks C3400	ColorWorks C3500	ColorWorks C831	ColorWorks C7500	ColorWorks C7500G	Premium Matte Ticket	Premium Matte Label	High Gloss Label	PE Matte Label	BOPP Satin Gloss Label	BOPP High Gloss Label
 Manufacturing	Food and drink label		••			••			••		••	••
	Packaging label	•	••		••	•		••	•			
	Cosmetic labels		•			••			••		••	••
	EU energy label	•	••		••	•		••	••	•	•	•
	GHS label (<4in wide)		••	•	••					••		
	GHS label (>4in wide)			••						••		
 Pharmaceutical and Healthcare	Prescription label	••	••					••				
	Laboratory label	••	••							••		
	Syringe label	••	••							••		
	Pharmaceutical label	••	••					••				
 Retail	Shelf tag	•	••				••	•				
	Price tag	•	••				••	•				
	Recipe label	••	••				••	•				
 Ticketing	Event ticket	•	••				••					
	ID badge	•	••				••			•		

- Recommended
- Also suitable

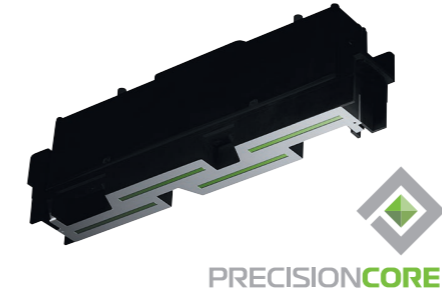
If you have any questions about either our products or our media, please visit www.epson.eu/colorworks

QUALITY THROUGH TECHNOLOGY

The combination of the new PrecisionCore technology, dot placement accuracy and superior quality of Epson ink delivers unbeatable print quality, reliability and speed.

PrecisionCore Technology

PrecisionCore is Epson's most advanced printhead architecture. It builds on our market-leading Micro TFP technology. PrecisionCore is the power behind our renowned industry-leading output quality and durability, delivered at the high speeds required for commercial and industrial printing. This means that you can rely on your ColorWorks C7500/C7500G to deliver consistent, accurate results, especially on small text, graphics and barcodes.



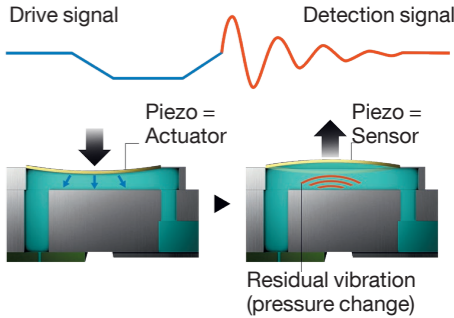
Self maintenance

Whenever the printer needs to carry out some internal maintenance there's no need to cut the paper or interrupt label production. The printhead has two positions – 'print' and 'home' – and it simply moves to the required position while maintenance takes place.



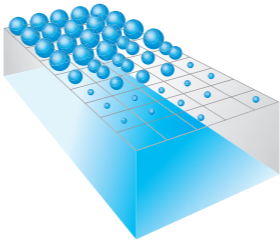
Nozzle Verification Technology (NVT)

Our printers are designed to deliver on-going print perfection with minimum user intervention. NVT works constantly behind the scenes to detect and bring blocked nozzles back to maximum operating performance.



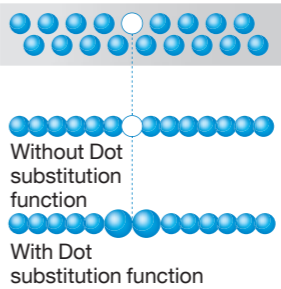
Variable Sized Droplet Technology (VSDT)

You get the perfect combination of speed, quality and efficient ink use with Epson VSDT. This targets the most suitable ink droplet size to different areas of a print to produce clarity in areas of fine detail while delivering optimum efficiency for larger areas of colour.



Dot substitution function

Blocked nozzles are normally fixed and back in action quickly and automatically, but should a nozzle remain temporarily blocked there's no reduction in print quality. This is because the neighbouring nozzles can print larger ink droplets to cover the affected print area.



Pigmented ink technology

To make sure that the ColorWorks C7500 Series is optimised to best meet the demands of our customers, two types of pigmented ink have been designed to specifically address certain needs for specific applications.

Epson's DURABrite Ultra ink is ideal for customers who want durable prints and who primarily want to print onto matte media. Our UltraChrome DL inks deliver high print quality and offer great results on glossy media.



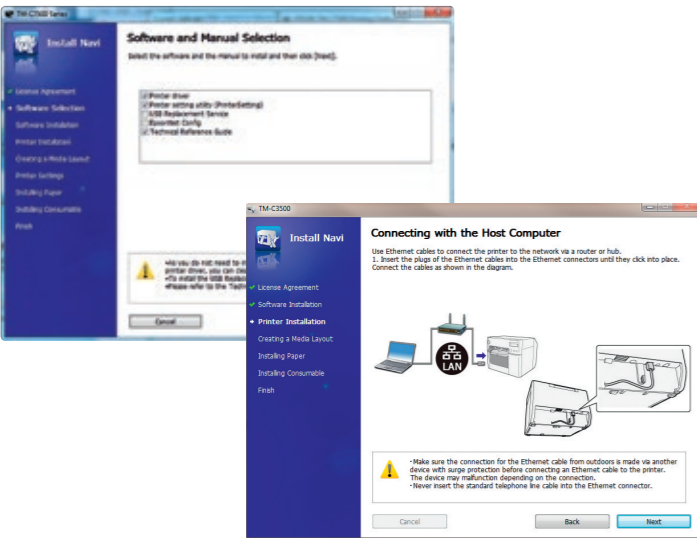
SOFTWARE INTEGRATION FULLY COVERED

We work hard to enable software solutions that are innovative and anticipate customer needs. Our ColorWorks range is compatible with leading software vendors, embedded programming languages and emulations. This gives you the sophisticated features you need, but also makes it easy to replace legacy technologies.

Microsoft Windows OS drivers and Epson InstallNavi software

Even inexperienced users find initial printer setup an easy task with Epson's bundled InstallNavi software. This guides you through each step, ensuring fault-free installation from physical setup to printer and media configuration.

In addition to the Epson InstallNavi software, Microsoft Windows® printer drivers are available for the C7500 Series, so printing from any Windows application is easy.



Native drivers for leading professional labelling software

The native drivers are using ESC/Label to allow the software applications to access and make use of all key features of the C7500 Series. Drivers are available for download from the software vendors website.



Direct Command Control

Our new printer language – ESC/Label gives you the power to control your C7500 Series printer from any operating system and/or software architecture. ESC/Label is also compatible to ZPLII, which allows easy for the replacement of legacy monochrome label printers. In addition to this, the ZPLII data stream can easily be enriched by colour, using new ESC/Label commands or Epson Printer Setting Utility.



SAP HPV drivers

Epson is the first printer vendor to support SAP's HVP (High Volume Printing) Vendor Concept. This gives you the best performance and usability when printing high volume, colour-enhanced data from SAP. The concept is part of SAP EH&S WWI, whose core is a printer-independent driver for Windows (developed by SAP) installed on the WWI server.

VERSATILE MEDIA TYPES

Print high-quality graphics and photos on a wide range of matte and glossy coated media. Epson DURABrite Ultra and UltraChrome DL pigment inks ensure accurate, smudge-proof prints that are resistant to water and other liquids.

Premium Matte Ticket

Optimised for high-quality graphics and photos, this smooth, bright white matte coated inkjet paper is 127µm thick (107g/m), making it ideal for ticketing and signage.



Perfect for ticketing, ID badge, shelf-tag and sign-printing

Premium matte coating for photorealistic printouts

Fast drying, scratch and water resistant results

PE Matte Label

Print long-lasting, durable synthetic adhesive labels that can handle extreme conditions. High-quality, scannable labels are smudge proof and resistant to water and most chemicals.



BS5609 certified, for GHS chemical labelling applications

Extremely durable and reliable – resistant to most chemicals

Permanent acrylic adhesive with excellent water and heat resistance

Premium Matte Label

Ideal for photo-quality printing, these smooth, bright white matte labels ensure fast drying prints that resist scratching, water and heat.



Ideal for barcode labels, box labels for consumer products, pharmaceutical labels and more

Permanent acrylic adhesive has very good heat resistance, even in low temperatures

Prints are resistant to smudging, water and other liquids

BOPP High Gloss Label

White high-gloss inkjet coated BOPP (biaxially oriented polypropylene) labels with water borne acrylic adhesive for permanent adhesion.



High-gloss coating, ideal for high-quality product labels for consumer products

Durable, synthetic (polypropylene-based) labels

Resistant to water and many other liquids

Universal, permanent acrylic adhesive

High Gloss Label

These high-gloss coated labels have a micro-porous, absorbent surface for photo-quality printing, combined with a permanent acrylic adhesive that sticks to various surfaces.



Best for product labels and box labels for consumer products

Permanent acrylic adhesive with very good heat resistance

Prints are resistant to smudging, water and other liquids

BOPP Satin Gloss Label

White satin-gloss inkjet coated BOPP labels with water borne acrylic adhesive for permanent adhesion.



Satin-gloss coating, ideal for high-quality product labels for consumer products

Durable, synthetic (polypropylene-based) labels

Resistant to water and many other liquids






Universal, permanent acrylic adhesive

CONSUMABLES AND OPTIONS

Printers			Consumables				
Name	Interface	Product code	Name	Type	Capacity	Product code	Image
ColorWorks C7500	USB and Ethernet	C31CD84012	SJMB7500	Maintenance box		C33S020596	
			SJIC26P(C)	Cyan	294.3ml	C33S020619	
			SJIC26P(M)	Magenta	294.3ml	C33S020620	
			SJIC26P(Y)	Yellow	294.3ml	C33S020621	
			SJIC26P(K)	Black	294.3ml	C33S020618	
ColorWorks C7500G	USB and Ethernet	C31CD84312	SJMB7500	Maintenance box		C33S020596	
			SJIC30P(C)	Cyan	294.3ml	C33S020640	
			SJIC30P(M)	Magenta	294.3ml	C33S020641	
			SJIC30P(Y)	Yellow	294.3ml	C33S020642	
			SJIC30 P(K)	Black	294.3ml	C33S020639	
ColorWorks C3500	USB and Ethernet	C31CD54012CD	SJMB3500	Maintenance box		C33S020580	
			SJIC22P(C)	Cyan	32.5ml	C33S020602	
			SJIC22P(M)	Magenta	32.5ml	C33S020603	
			SJIC22P(Y)	Yellow	32.5ml	C33S020604	
			SJIC22P(K)	Black	32.6ml	C33S020601	
ColorWorks C831	USB and Ethernet	C11CC68132	GJIC5(C)	Cyan	32.5ml	C13S020564	
			GJIC5(M)	Magenta	32.5ml	C13S020563	
			GJIC5(Y)	Yellow	32.5ml	C13S020565	
			GJIC5(K)	Black	97.8ml	C13S020566	
ColorWorks C3400	USB Ethernet	C31CA26012 C31CA26032	SJIC15P	3-colour CMY	78.9ml	C33S020464	
TU-RC7508		C32C815471		Rewinder			

¹The printhead is covered by the warranty of the printer. Standard warranty of the printer is 1 year or 500km of accumulated printed length, whichever comes first. Check with your Epson authorised dealer for the optional extended warranty packages available in your region.
²Product lifetime of ColorWorks C7500 is defined as 500km of paper length fed.
³When printed on Epson PE Matte Label media.
⁴In a research carried out by TÜV Rheinland LGA Products GmbH, August 2014. To access the full report visit <http://assets.epson-europe.com/emails/CostEffectiveEDM/TUV-final-report-corrected.pdf>
⁵Complies with the latest GHS standards for chemical labelling.

PRINTER SPECIFICATIONS

						
		C3400	C3500	C831	C7500	C7500G
Technology	Printing method	Serial inkjet printer (MicroPiezo)	Serial inkjet printer (MicroPiezo)	Serial inkjet printer (MicroPiezo)	Line printer (PrecisionCore MicroTFP)	Line printer (PrecisionCore MicroTFP)
	Nozzle configuration	180 Nozzles per colour	360 Nozzles per colour	360 Nozzles per colour	600 Nozzles per colour	600 Nozzles per colour
	Colours	Magenta, Yellow, Cyan	Magenta, Yellow, Cyan, Black	Magenta, Yellow, Cyan, Black	Magenta, Yellow, Cyan, Black	Magenta, Yellow, Cyan, Black
	Ink technology	DURABrite™ Ultra	DURABrite™ Ultra	DURABrite™ Ultra	DURABrite™ Ultra	UltraChrome DL
Print	Printing speed	Max. 92mm / sec at 360 × 180 DPI (printing width 56mm)	Max. 103mm / sec at 360 × 360 DPI (printing width 56mm)	Max. 92mm / sec at 360 × 360 DPI	Max. 300mm/sec at 600 × 1,200 DPI (printing width 108mm)	Max. 300mm/sec at 600 × 1,200 DPI (printing width 108mm)
	Printing resolution	Max. 720 × 360 DPI	Max. 720 × 360 DPI	Max. 5,760 × 1,440 DPI	Max. 600 × 1,200 DPI	Max. 600 × 1,200 DPI
	Printing width	Max. 104mm	Max. 104mm	Max. 203mm	Max. 108mm	Max. 108mm
Media	Formats	Roll (4in external diameter), Fanfold paper	Roll (4in external diameter), Fanfold paper	Fanfold media with sprockets	Roll (8in external diameter), Fanfold paper	Roll (8in external diameter)
	Width	Min 30mm, Max 112mm	Min 30mm, Max 112mm	Min 76mm, Max 241mm	Min 50mm, Max 112mm	Min 50mm, Max 112mm
	Type	Continuous label, Continuous paper, Die-cut label, Black mark paper, Black mark label	Continuous label, Continuous paper, Die-cut label, Black mark paper, Black mark label	Continuous paper, Die-cut label	Die-cut label, Black mark paper, Black mark label	Die-cut label, Black mark paper, Black mark label
General	Interfaces	USB 2.0 Type B, Ethernet interface (100 Base-TX / 10 Base-T) (optional)	USB 2.0 Type B, Ethernet interface (100 Base-TX / 10 Base-T)	USB 2.0 Type B, Ethernet interface (100 Base-TX / 10 Base-T), Bidirectional parallel	USB 2.0 Type A, Ethernet interface (100 Base-TX / 10 Base-T)	USB 2.0 Type A, Ethernet interface (100 Base-TX / 10 Base-T)
	Autocutter	Included	Included	–	Included	Included
	Supply voltage	100 ~ 240 V, 50 ~ 60 Hz	100 ~ 240 V, 50 ~ 60 Hz	100 ~ 240 V, 50 ~ 60 Hz	110 ~ 240 V, 50 ~ 60 Hz	110 ~ 240 V, 50 ~ 60 Hz
	Power consumption	Standby: Appx. 5 W, Printing: Appx. 26 W	Standby: Appx. 3 W, Printing: Appx. 30 W	Standby: Appx. 8 W, Printing: Appx. 33 W	Standby: Appx. 4 W, Printing: Appx. 86 W	Standby: Appx. 4 W, Printing: Appx. 86 W
	Temperature / humidity	Storage: -20~60 °C (5~85 % RH), Printing: 10~35 °C (20~80 % RH)	Storage: -20~60 °C (5~85 % RH), Printing: 10~35 °C (20~80 % RH)	Storage: -20~40 °C (5~85 % RH), Printing: 10~35 °C (20~80 % RH)	Storage: -20~60 °C (5~85 % RH), Printing: 5~35 °C (20~80 % RH)	Storage: -20~60 °C (5~85 % RH), Printing: 5~35 °C (20~80 % RH)
	Product dimensions	255 × 275 × 261mm (Width × Depth × Height)	310 × 283 × 261mm (Width × Depth × Height)	464 × 465 × 224mm (Width × Depth × Height)	392 × 598 × 395mm (Width × Depth × Height)	392 × 598 × 395mm (Width × Depth × Height)
	Product weight	10kg	12kg	12.68kg	37kg	37kg
	Printer drivers	Windows	Windows	Windows	Windows	Windows
	Command set	–	–	–	ESC/Label	ESC/Label

CoverPlus

Better Products
for a Better Future[®]



At Epson we strive to create innovative, superior products that are reliable, recyclable and energy efficient. We use fewer resources, helping to ensure a better future for us all.

Not all products are available in all countries. For further information, please contact your local Epson office or visit www.epson-europe.com

For further information please contact your local Epson office or visit www.epson-europe.com

Austria 01 253 49 78 333 **Belgium** +32 (0)2 792 04 47 **Czech** 800/142 052 **Denmark** 44 50 85 85 **Finland** 0201 552 091 **France** 09 74 75 04 04
(Cost of local call, operator charges may apply) **Germany** +49 (0) 2159/92 79 500 **Greece** 210-8099499 **Hungary** 06800 147 83 **Ireland** 01 436 7742
Italy 02-660321 10 (0,12 €/min) **Luxembourg** +352 27860692 **Middle East** +9714 8872172 **Netherlands** +31 (0)20 708 5099 **Norway** +47 67 11 37 00
Poland 0-0-800 4911299 (0,16 zł/min) **Portugal** 707 222 111 **Russia** (095) 777-03-55 **Slovakia** 0850 111 429 **South Africa** (+2711) 465-9621
Spain 93 582 15 00 **Sweden** 0771-400135 (Mobilsamtal – 0,99 kr/min, Lokala samtal – 0,30 kr/min, Utlandssamtal – 0,89 kr/min)
Switzerland 022 592 7923 **Turkey** (0212) 3360303 **United Kingdom** 0871 222 6702

Trademarks and registered trademarks are the property of Seiko Epson Corporation or their respective owners.
Product information is subject to change without prior notice.

EPSON[®]